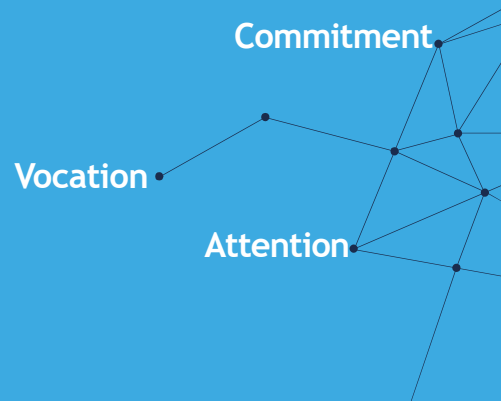


CST:
CONSORCI SANITARI DE TERRASSA



A vital project:
discover it







CST: Our values

Consorci Sanitari de Terrassa is an integrated healthcare organization providing healthcare services to people inside the Catalan National Healthcare System (SISCAT), from primary childcare, adult care and geriatrics to hospital care. Founded in 1988, together with the Generalitat de Catalunya (Catalan Government), Ajuntament de Terrassa (Terrassa City Hall) and Fundació Sant Llàtzer.

We care for more than 200,000 people in the towns within the Vallès Occidental region. We also offer our services to the elderly, homecare services or in our social healthcare centres and we count with the most advanced technology. But above all, we want to be close to you. We not only want to cure your illnesses, but we want to help you prevent them. We are here, so that you and your family can enjoy a healthy and active lifestyle.

CST:

A vision that comes from afar. Get to know our strategic plan



Since 1988, our mission has been to care for the health and wellbeing of the population. Since then, we have grown as people and as professionals, and the healthcare needs of our patients have changed.

In order to share the same clear and well defined objectives, we have outlined a four year roadmap: Strategic Plan 2016-2020. We are pleased to present to you six of the most important lines of this roadmap:





Assessment & Result Orientation

We assess ourselves continually aiming to obtain excellence in healthcare, research and training. Measuring the results and comparing ourselves with other healthcare institutions in order to optimize our resources

Sustainability & Corporate Social Responsibility

Resources are not limitless, but they should never hinder the quality of healthcare. The secret is to manage these resources efficiently and impartially so that users and patients receive optimum attention

Knowledge R&D+i

Research is carried out to improve diagnosis and treatments. We train new generations of healthcare professionals. We transfer knowledge from one professional to another, from one department to another and we share this knowledge with the rest of the scientific community



THIS IS HOW WE DO IT...



Integrated Healthcare at all levels of healthcare assistance.



Technologies & Systems Information as helping elements



Communication, to guarantee transparency and our relationship with our key agents



Continuous Innovation as the motor for change



Alliances to complete the capacity and resources and development of new services

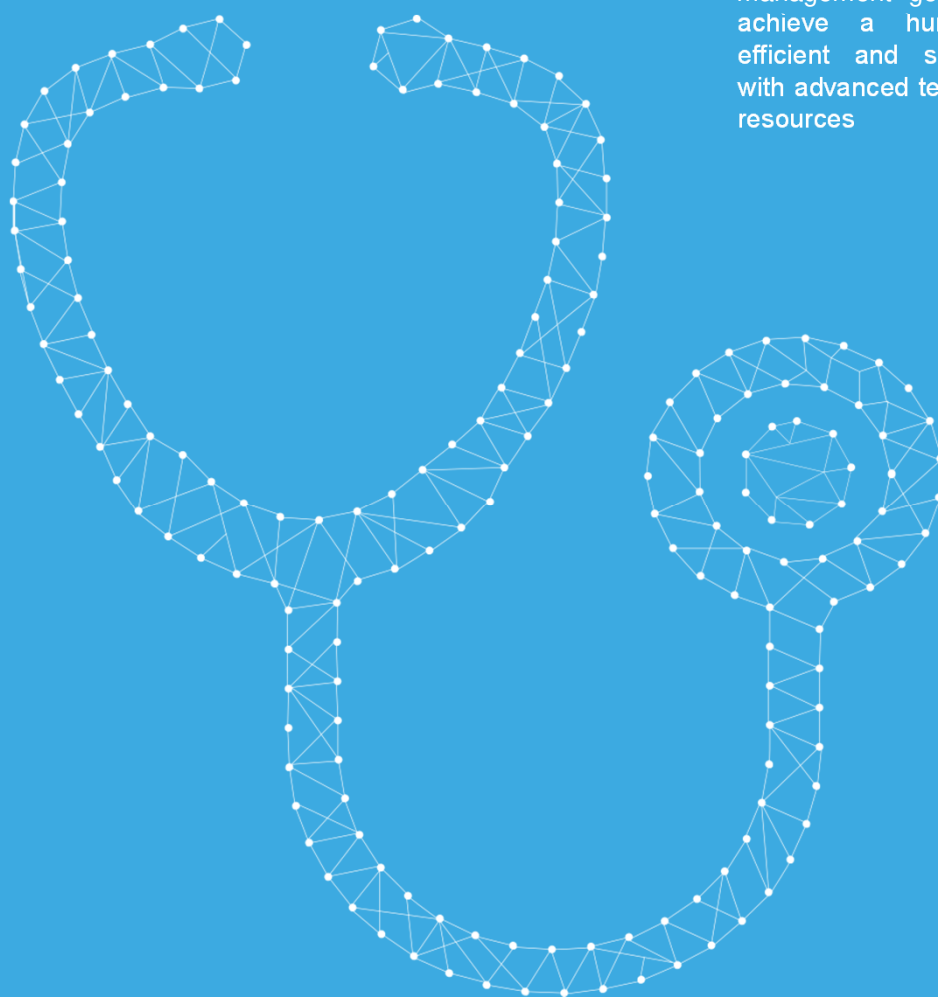
CST:

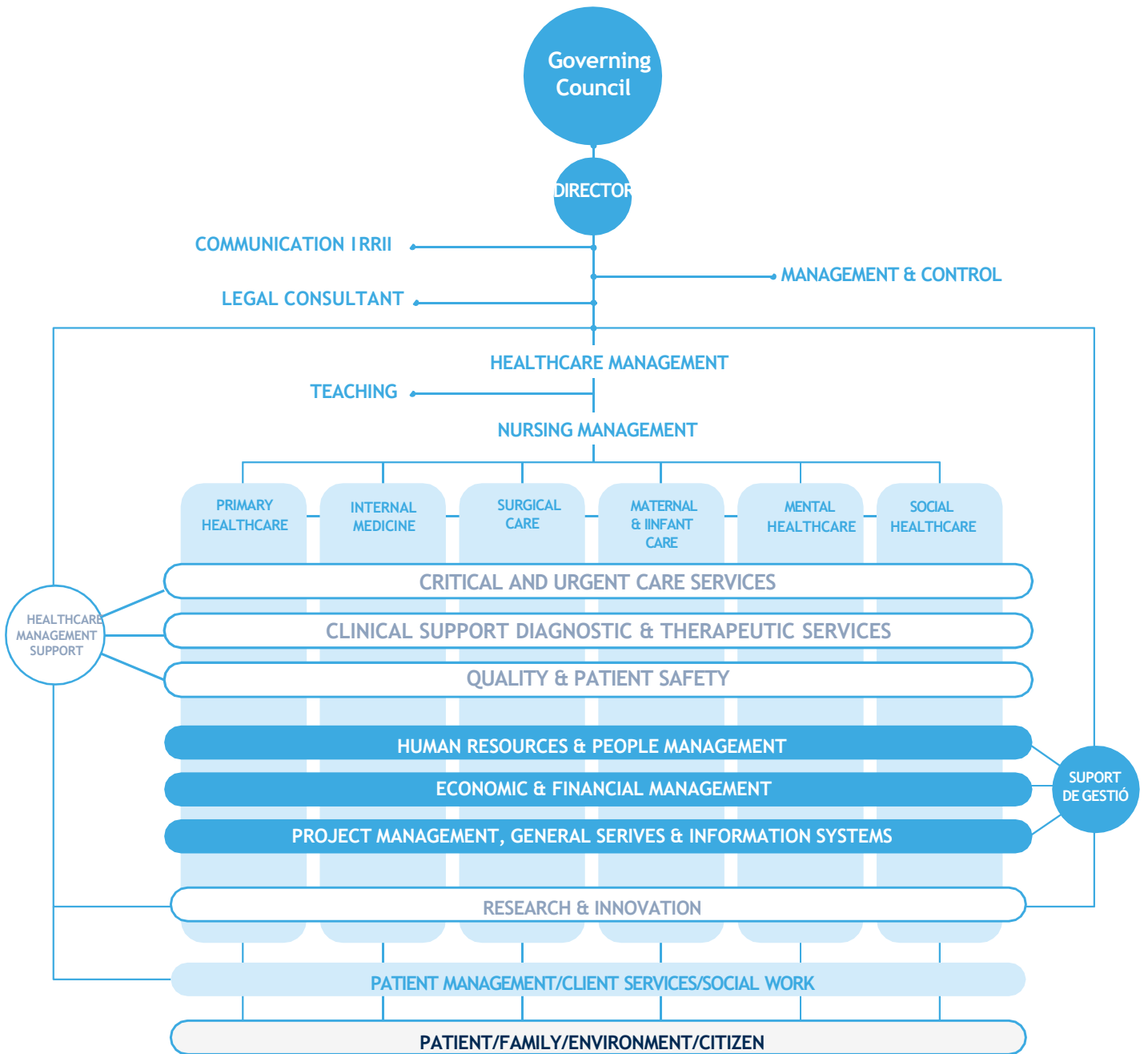


CST:

Interconnected: This is how we do it

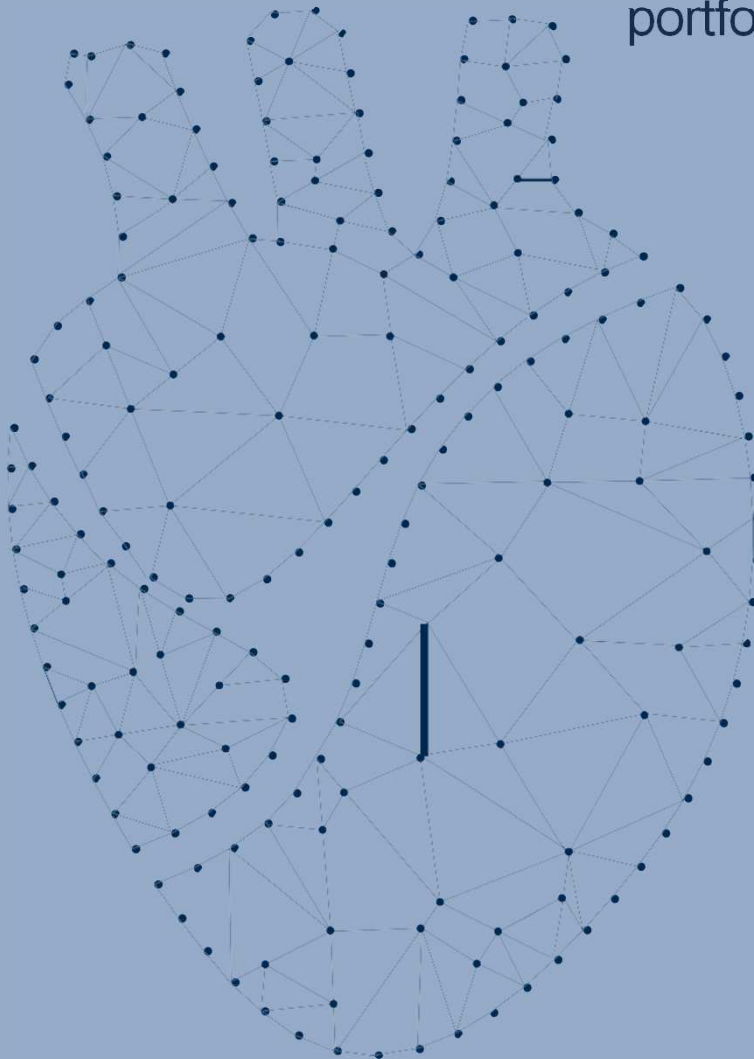
At Consorci Sanitari de Terrassa our strengths in healthcare assistance and in healthcare management go hand in hand to achieve a humanized, friendly, efficient and sustainable service with advanced technical and human resources





CST:

**A single heartbeat:
discover our wide
healthcare service
portfolio**



At Consorci Sanitari de Terrassa we stand by our patients in all stages of life. We guarantee continuous healthcare and social care assistance. We organize ourselves following the efficiency criteria of accessibility for all, always thinking and looking out for our patient's wellbeing.

Care Areas

Our model is based on areas of care that group together resources from all levels of healthcare assistance in order to respond to similar clinical processes. Each area offers a set of functions and benefits for clinical use.



**Primary
Healthcare
&
Social
Healthcare**

Our Primary Healthcare team is the first contact our patients have with the healthcare system and it is here, where they establish their closest and lasting ties. We aim for a primary healthcare that is warm and personalized.

SERVICES	PUBLIC HEALTH	PROGRAMMES
<ul style="list-style-type: none">• Nursing• Family & Community Health• Odontology• Paediatrics• Social Work• Youth Assistance	<ul style="list-style-type: none">• Medical Information• Health Promoting & Prevention• Risk Prevention	<ul style="list-style-type: none">• Sexual & Reproductive Healthcare (ASSIR)• Drink Less (Alcoholism)• Healthy Child• Antenna (Mental Health)• Implementing Physical Activity• Health & School• Community Healthcare• Smoking & Tabaco





Internal Medicine

Prevention, diagnosis and treatment of acute and chronic illnesses in adults, recovery of daily functions, active and healthy ageing and end of life assistance are some of our action areas that closely collaborate both with Primary Care and Social Healthcare, to guarantee continuous care assistance. Furthermore, this department trains new specialists and they also develop clinical research

SERVEIS

- Allergology
- Cardiology
- Dermatology

- Endocrinology
- Gastroenterology

- Haematology
- Internal Medicine
- Nephrology
 - Haemodialysis
- Neurology
- Oncology
 - Medical Oncology
 - Genetic Counselling
 - Psycho-oncology
- Pneumatology
- Oncologic Radiotherapy

- Rheumatology
- Geriatric Care Area:
 - Convalescence
 - Geriatrics
 - Geriatric Acute Care (UGA)
 - Sub-acute
- Palliative Care Area :
 - Palliative Care
 - Integrated Ambulatory Healthcare (EAIA)
 - Home healthcare programme & Support Teams (PADES)
 - Interdisciplinary Social-Healthcare Functional Unit (UFISS)

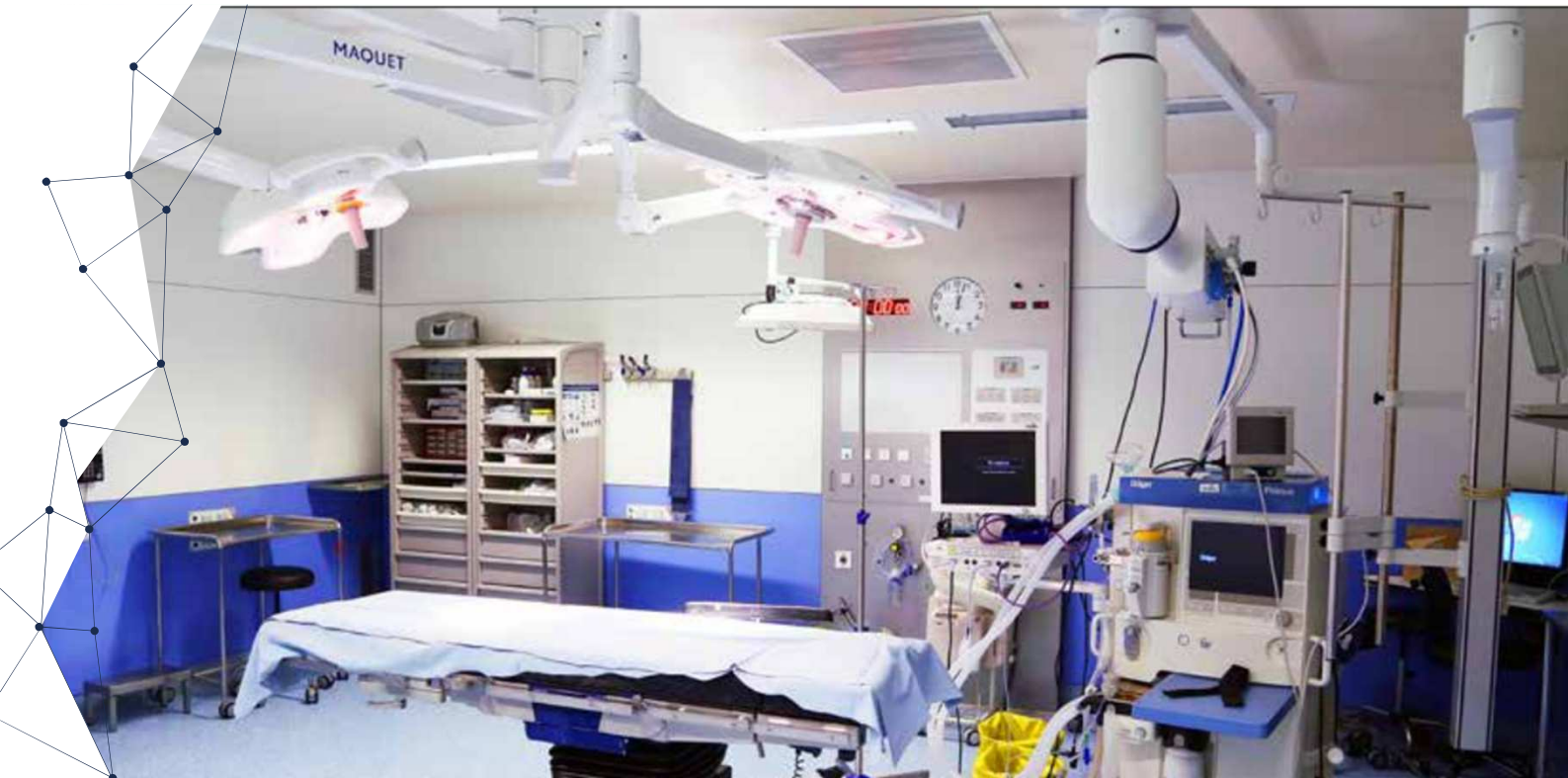
Critical & Urgent Patient Care

We aim to improve the coordination between services assisting critical and urgent patients, as well as, being reference to all programmes and action codes in those pathologies requiring an urgent intervention

SERVICES

- Emergency Services
- Intensive Care Medicine
- Home Visiting Services (SAD)
- Medical Emergency System (SEM)





Surgical Services

Surgical assistance is primarily carried out at Hospital de Terrassa with some of the ambulatory surgical procedures being performed at some of the Primary Care Centres and at the Penitentiary Hospital. Hospital de Terrassa counts with 11 surgical theatres distributed in two separate wards.

SERVEIS

- Anaesthesiology, Recovery and Pain Clinic
- General & Digestive Surgery
- Traumatology & Orthopaedic Surgery (COT)
- Plastic & Reconstructive Surgery
- Thoracic Surgery
- Vascular Surgery
- Gynaecology
- Ophthalmology
- Otorhinolaryngology (ORL)
- Urology

Maternal & Infant Care

Maternal and Infant Care serves not only our obstetrics and paediatric patients, but it also serves their families. We approach the natural pregnancy process, as well as, delivery and post-delivery processes from a scientific and medical perspective, and always in a respectful and personal approach.

SERVEIS

- Paediatric Allergology
- Paediatric Cardiology
- Paediatric Surgery
- Paediatric Endocrinology
- Paediatric Gastroenterology
- Paediatric Haematology
- Paediatric Nephrology
- Neonatology
- Paediatric Neurology
- Obstetrics
- Paediatrics
- Infant/Juvenile Psychology





Mental Healthcare

Our Mental Healthcare approach is from an integrated, multidisciplinary perspective, both, in a hospital setting, as well as, outpatient. We also address the social, employment and family consequences related to psychiatric illnesses and we stand alongside our users and their families during the reinsertion process.

- SERVICES**
- Toxic and Non-toxic Addictions
 - Acute Adult Hospitalization
 - Mental Health Nursing
 - Neuropsychology
 - Clinical Psychology
 - Psychiatry
 - Community Rehabilitation
 - Adult Mental Health
 - Infant/Juvenile Mental Health
 - Mental Health Adult Hospitalization Unit

- PROGRAMMES**
- Early onset Psychotic Care
 - Individualized Assistance Programme (PSI)

Social Healthcare

Disability and dependence is a day to day challenge for families. Our Social Healthcare Services are here to offer support to the patient and their caregivers, thanks to the combined effort coordinated by physicians, psychologists, neuropsychologists, nurses, physiotherapists, occupational therapists, social workers, social-cultural animators, social graduates, nursing assistants, as well as, geriatricians.

- Ambulatory Integrated Care Team (EAIA) of cognitive disorders
- Disability Oriented Assessment Team (EVO)
- Psychogeriatric Day Hospital
- Day Hospital for Alzheimer Patients
- Convalescent Home
- Supervised Home for the Intellectually Disabled
- Long-Term Hospitalization
- Dependency Assessment Services





Clinical
Support
Services

CLINICAL SUPPORT SERVICES

- Diagnostic Area
- Pathological Anatomy
- Laboratory
- Diagnose by Imaging
- Molecular Genetics
- Pharmacy & Medication Area
- Patient Records

CST:

2.600 professionals

17 centres

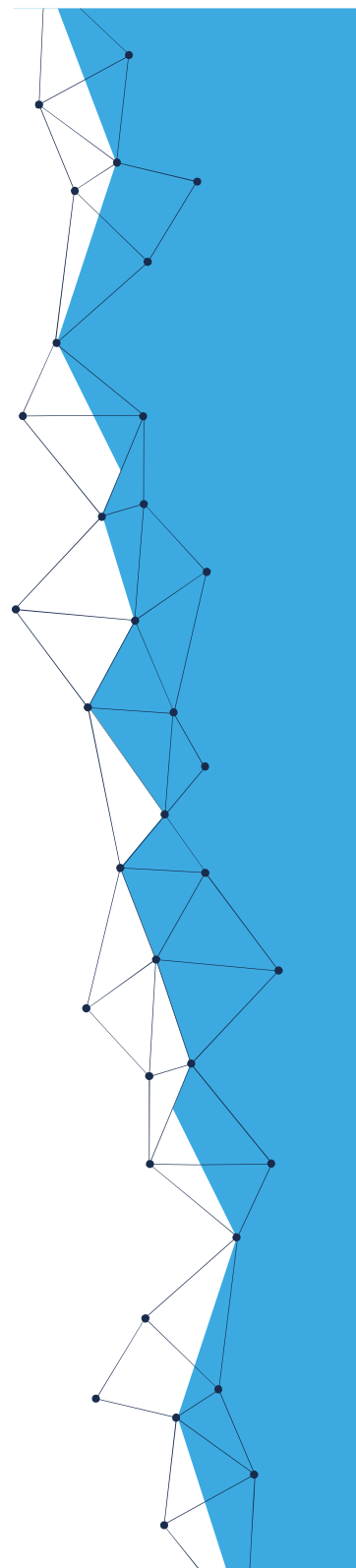
A single organism:
see where you can find us

Consorci Sanitari de Terrassa covers more than just the City of Terrassa. We offer Healthcare Services to 7 other Cities in the region of Vallès Occidental:

- Terrassa
- Rubí
- Sabadell
- Sant Quirze del Vallès
- Castellbisbal
- Matadepera
- Sant Cugat del Vallès

Discover which Primary Healthcare Centre is nearest you and which is your reference hospital.

Our centres are like the organs in a healthy body: each exercises a different function and all well coordinated, because they need each other in order to be effective. We are strategically distributed in different areas in the region, but perfectly tuned, to offer an excellent healthcare assistance to each and every patient according to their needs.





Primary Healthcare: you are first



CAP Terrassa Est
C/Ciutat Real, 31
08227 - Terrassa



CAP Anton de Borja
C/Edison (Cant. ftarconi)
S/N - 08191 - Rubí



CAP Sant Llàtzer
C/Riba, 62
08221 - Terrassa



CAP Sant Genís
C/ftiquel ftumany
Campderrós, 11-19,
08191 - Rubí



CAP Terrassa Nord
C/Vint-i-cinc
de Setembre, 26
08226 - Terrassa



CAP Doctor Joan Planas
Avda. Pau Casals, 12
08755 Castellbisbal



CAP Matadepera
Plaça de l'Ajuntament, 2
08230 - ftatadepera

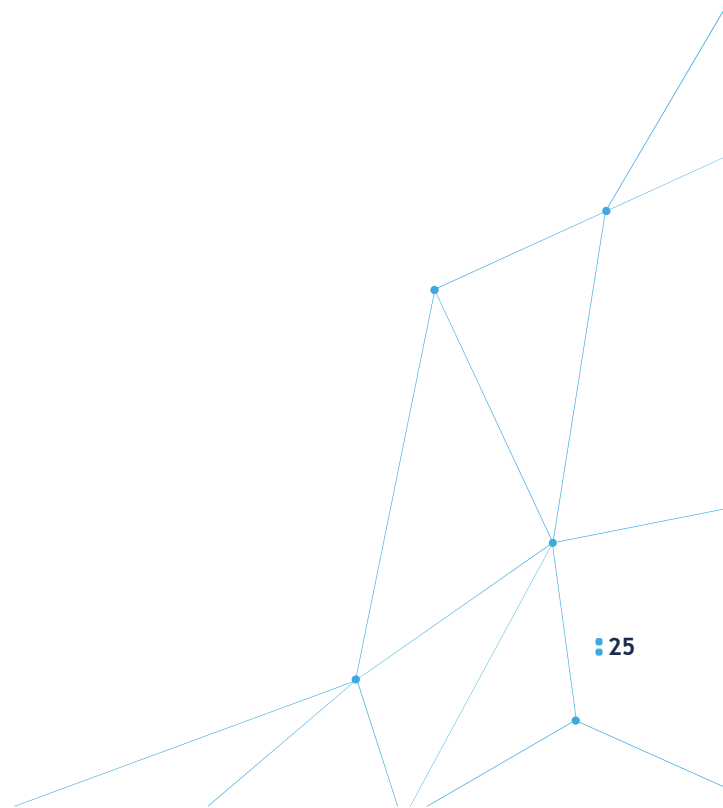
Hospitals: medical technology, research and humanity



**Unitat d'Hospitalització
Penitenciària**
Ctra. Torrebonica, S/N
08227 - Terrassa



Hospital de Terrassa
Ctra. Torrebonica, S/N
08227 - Terrassa



Mental Healthcare Centres: because wellbeing must be integral



Centre de Salut Mental d'Adults de Terrassa
Plaça Dr. Robert, 1, 2n pis
08221 - Terrassa



Servei de Rehabilitació Comunitària de Terrassa
C/ Bartolomé Díaz, 5
08224 - Terrassa



Centre de Salut Mental Ferran Salses i Roig
C/ Nou, 28
08191 - Rubí



Servei de Rehabilitació Comunitària de Rubí
C/ Pitàgores, 4
08191 - Rubí

Social Healthcare Centres: near to those who need us



**Hospital Sociosanitari
Sant Llätzer**
Plaça Dr. Robert, 1
08221 - Terrassa



**Llar Residencial
Sant Llätzer**
Pl Dr Robert, 1.
08221 –Terrassa



Hospital de dia Sant Jordi
C/ Edison, 15-37
(Cant. Pintor Fortuny)
08224 - Terrassa



Llar Tutelada de Rubí
C/ Dr. Ferran, 21-23 Baixos
08191 - Rubí

Sports Medicine: we give our best so that you can be the best



Unitat Assistencial Centre d'Alt Rendiment Esportiu
Avda. Alcalde Barnils, S/N
08173 - San Cugat del Vallès

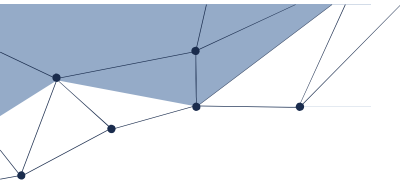
Figures with name and surname : 8.700 users daily

Each day 8.700 users visit one our Centres. Each one, unique and unrepeatable, each with their own health background and peculiarities, with their challenges, fears, projects and hopes. We greet each and every one with empathy and professionally to improve their quality of life.

We cannot write here all the names or those of the more than 200.000 people ascribed to our services. We cannot quantify a nurse's smile, the doctor's ability to listen to a patient, a paediatrician's sympathy, the exhaustion of those on call and those dedicating their weekends to meetings, seminars and congresses...

But we can definitely share figures to help you understand the complexity and dedication of our work. Remember, that behind these cold figures, there are people who live with passion, generosity and vocation their profession, a valuable sign of identity of all our professionals who are part of Consorci Sanitari de Terrassa.





4.390

Patients at PRIMARY CARE CENTRES (appointments, nursing continuous care, off schedule visits and home visiting services)



460

Patients HOSPITALIZATION (Hospital de Terrassa, Penitentiary Hospital and Hospital de Sant Llàtzer)



80

RESIDENTS (Convalescent Home Sant Llàtzer and Supervised Home at Rubí)



60

SURGICAL Patients (surgically intervened requiring hospitalization or not (Major Ambulatory Surgery), minor ambulatory surgery, labour and delivery and caesareans)

320

Patient URGENT CARE (Adult Urgent and Paediatric Care)





80

Patient DIALYSIS AREA (Peritoneal dialysis, chronic dialysis and chronic and hemodiafiltration online)



240

Patient REHABILITATION AREA



2.860

Patient AMBULATORY AREA

950 Patient Outpatient Clinics (Hospital de Terrassa, Social-Healthcare Sant Llützer Hospital and Primary Care Centres)

180 Patient Day Hospital (Hospital Terrassa, Sant Jordi Day Hospital for Alzheimer Patients, Sant Llützer Hospital and Mental Health Centres)

900 Patient Therapeutic and Diagnostics

550 Laboratory extractions at Hospital de Terrassa

260 Patient Mental Health Centres (centres at Terrassa and Rubí)

20 Athletes at Centre d'Alt Rendiment de Sant Cugat del Vallès (High Performance Sports Centre)



160

Patients at RADIOTHERAPY (Hospital de Terrassa and Manresa Hospital)



50

Participation in Meetings, Seminars, Congresses



CST:

**Reference Services:
Singular & Regional**



Functional Units are a paradigm of an Integrated Healthcare Organization composed by professionals from different disciplines who proceed in a coordinated manner in order to respond to the healthcare needs of patients with a specific clinical problem.

However, CST counts with reference services that assist the different segments of the population or patients from other territories

- Penitentiary Hospital Unit (UHP)
- Oncological Radiotherapy
 - Units at Terrassa Hospital, Manresa Hospital and Hospital General de Catalunya
- Sports Medicine
 - Preventive Healthcare, High Performance Sports Centre, (Centre d'Alt Rendiment de Sant Cugat)
- Plastic and Reconstructive Surgery
- Nephrology
- Allergology
- Ophthalmological (Emergencies)





The patient at the centre of it all: functional units

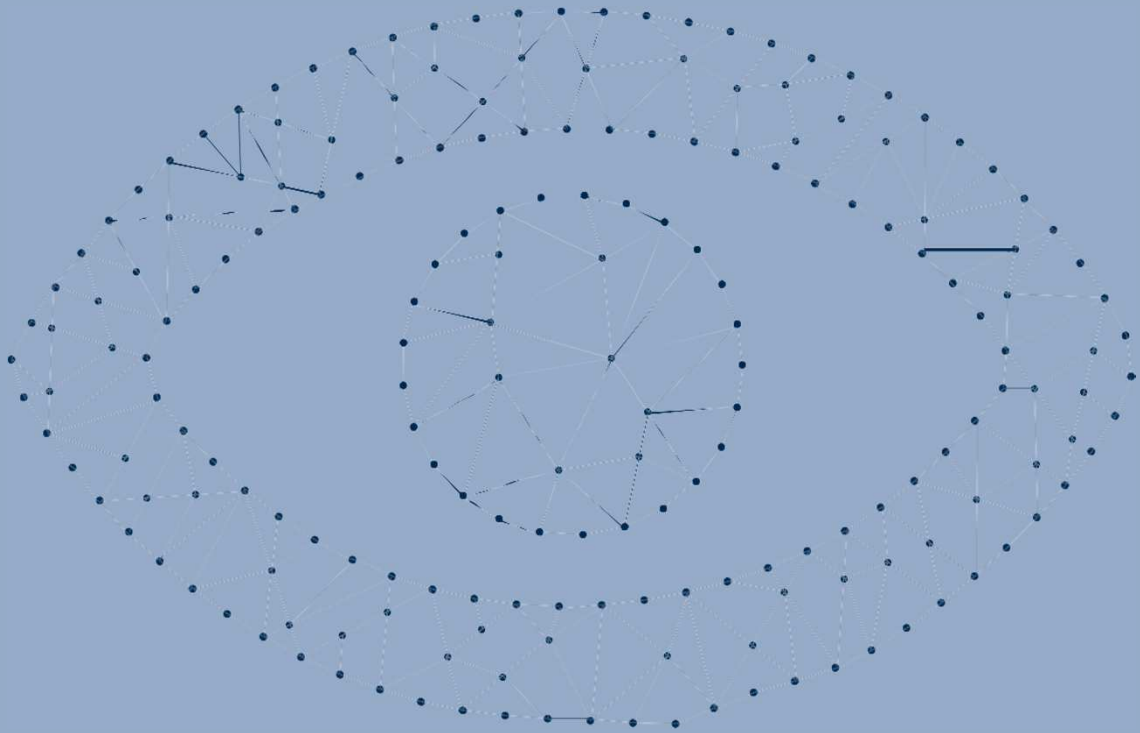
The birth of medical specialties was a giant step for medicine. Specializing in the different systems and functions of the human body has permitted us to expand in the prevention, diagnosis and treatment of many complex illnesses. But we must never forget that human beings are a whole, and that pathologies are better approached combining knowledge and collaboration from all of the different specialties.

For this reason, at Consorci Sanitari de Terrassa we have created MULTIDISCIPLINARY FUNCTIONAL UNITS. Healthcare professionals from different specialties closely collaborating in the care of each patient in an integrated manner. The patient is not the one who goes from doctor's office to doctor's office, but instead, we are the ones who orbit around the specific needs of each patient.

- Mammary Pathology
- Pelvic Floor
- Intestinal Inflammatory Disease
- Rectal and Colon Cancer
- Complex Chronic Patient
- Dementia Unit
- Perinatal Mental Healthcare
- Chronic Complex Wounds
- Hepatology
- Infectious Sexually Transmitted Diseases
- Social Paediatrics

CST:

**Eagerness to discover:
research and development**



The corpus of clinical knowledge advances at the same rate as science. With each new day we gain more knowledge of the human body, prevention, diagnostics, treatments and illnesses, but there is still more to discover. At Consorci Sanitari de Terrassa we constantly promote the need to daily update ourselves with the new medical advances.

But we are not satisfied just being spectators, we are also contributing with science with the daily effort of our research teams. We prioritize multicentre research that is linked with our daily healthcare activity. In other words, we investigate to improve the lives of millions of patients at local, national levels, as well as internationally.

CONSOLIDATED LINES OF RESEARCH

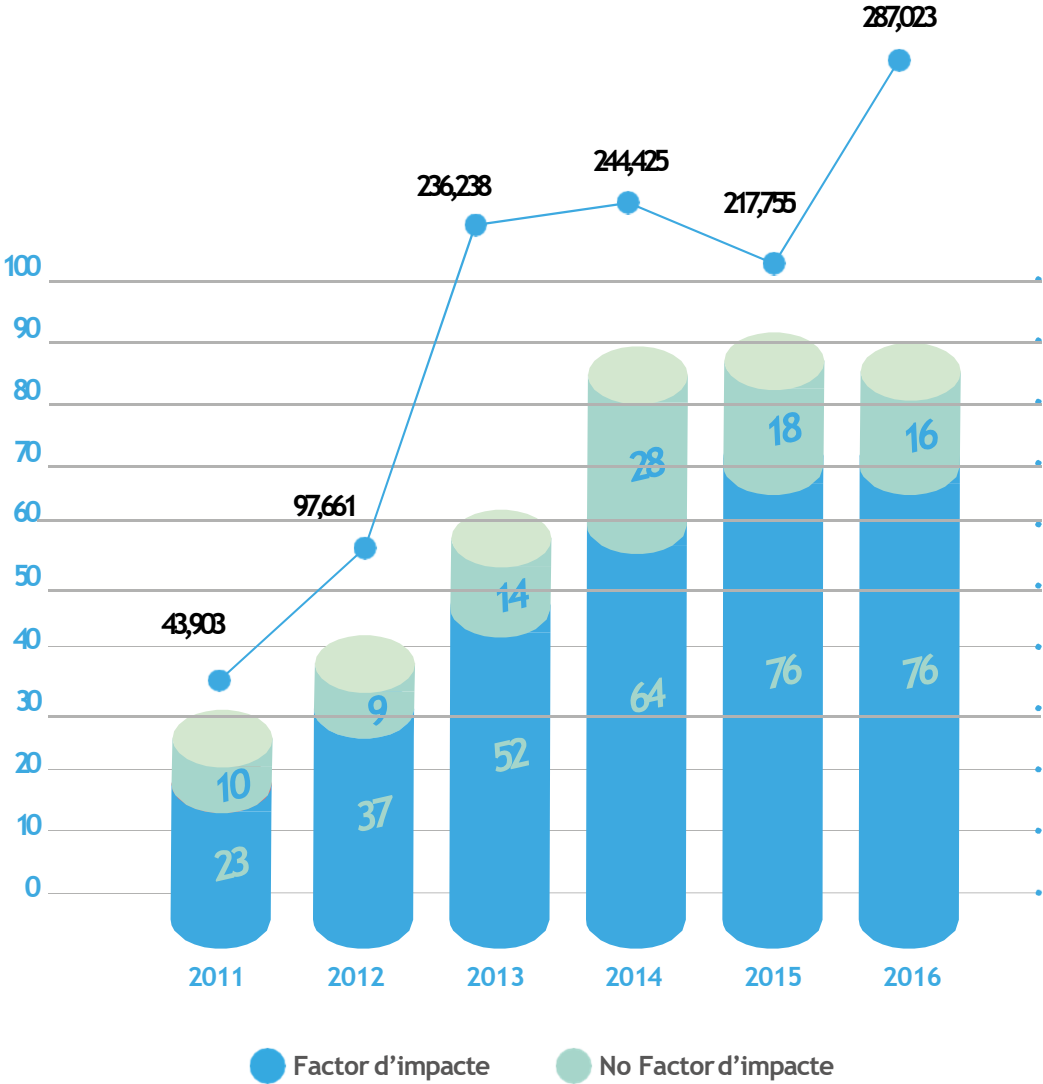
- **Molecular Genetics:** ophthalmic genetics and pharmaceutical genetics
- **Neuropsychology:** neurodegenerative, mental and cerebrovascular illnesses. Cognitive rehab and social cognition.
- **Quality:** management indicators in clinical laboratories. Patient safety.
- **Primary Healthcare:** cardiovascular risk factors (diabetes and obesity)
- **Digestive:** intestinal inflammatory disease, chronic hepatopathy, early diagnostics and invasive colorectal tumours.
- **Mental Health:** schizophrenia and other mental health illnesses: neurophysiology, neuroimaging and genetics.
- **Healthy Ageing:** dementias, dependency and news applied technologies.
- **Traumatology:** back pathology and orthopaedic surgery.
- **Infectious Diseases:** bacteraemia, multi-resistant germs, rickettsiosis

EMERGING LINES OF RESEARCH

- **Biomedical Cancer Research:** radiotherapy, clinical oncology, oncogeriatrics, palliative care and psych-oncology
- **Non-toxic addictions,** attention deficit disorders with hyperactivity and anxiety
- **Sports Medicine:** sports and healthy habits; cancer and sport.
- **Applied Neurosciences:** multiple sclerosis and Parkinson's disease
- **Penitentiary Health:** telemedicine
- **Surgery:** functional side effects due to anterior rectal surgery
- **Chronic Wound Unit:** leg ulcers, diabetic foot ulcers, applying larvae to debride, wounds and visco-elastic to prevent pressure wounds



Published Articles & Impact Factor



CST:

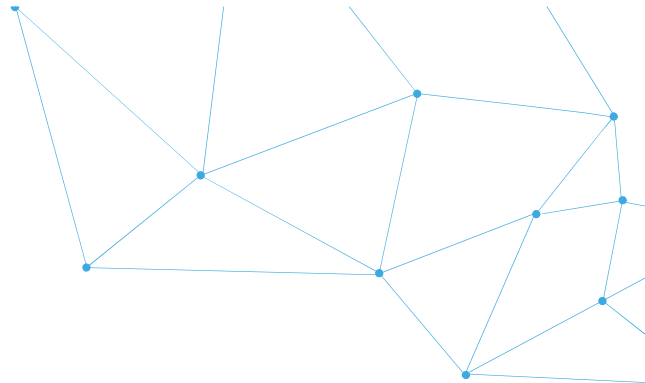
We Transfer Knowledge: training future healthcare professionals

Knowledge is a basic human right and we are compromised to preserve it. Part of our vocation is to guarantee that future healthcare professionals are just as equipped and good as our current professionals and even better ones.



Consorci Sanitari de Terrassa has a long teaching history that began in 1979 with the first postgraduate courses.

We train professionals in Medicine, Nursing and Clinical Psychology. Likewise, at our Centre, undergraduate training is carried out in: Medicine, Pharmacy, Genetics, Physics, Psychology, Nursing, Odontology, Physiotherapy, Social Work and Occupational Therapy, they come through our installations to acquire experience and complete their university training. We also have students completing their vocational training in healthcare.



Currently we have 124 Residents from the different specialties in Health Sciences

46 residents

- Anaesthesiology & Reanimation
- General Surgery & Digestive System
- Orthopaedics & Traumatology
- Geriatrics
- Internal Medicine
- Nephrology
- Ophthalmology
- Paediatrics
- Radio-Diagnostics

Multi-professional Teaching Units
78 residents

- UDM Family and Community Healthcare
- UDM Gynecology and Obstetrics
- UDM Mental Health

CST ● FUNDACIÓ
JOAN COSTA ROMA

We achieve these objectives through the Fundació Joan Costa Roma, constituted in 1998 to promote research, teaching, training and innovation



Our next objective is to become a University Hospital partnering with Universitat Internacional de Catalunya (UIC) opening opportunities for future university studies in Health Sciences.

euit:

We collaborate with the Escola Universitària d'Infermeria i Teràpia Ocupacional de Terrassa (EUIT), linked to UAB, and dedicated to the teaching of nursing and occupational therapy studies and other postgraduate and master's degrees.

CST:

**A helping hand:
near your**



Corporate Social Responsibility encompasses all that we are and do. Just like it is commonly said "is in our blood", or better yet, in our DNA. It is incorporated in our daily management activities, in all the processes and procedures, and the effect is very visible in the five big impact areas.



GOOD GOVERNMENT

- Transparency Portal
- Good Government code
- Clinical Ethics Committee
- CST Ethics Code



ENVIRONMENTAL

- Establishment of Environmental Policy
- Waste Management
- Energy Efficiency
- Plans of Energy Savings (biomass central)
- "Biomass" Space



EMPLOYMENT

- Training and Professional development
- Adaptation of working areas
- Employee Health Services
- Gender Equality Plan
- Smoking Cessation Project for healthcare professionals



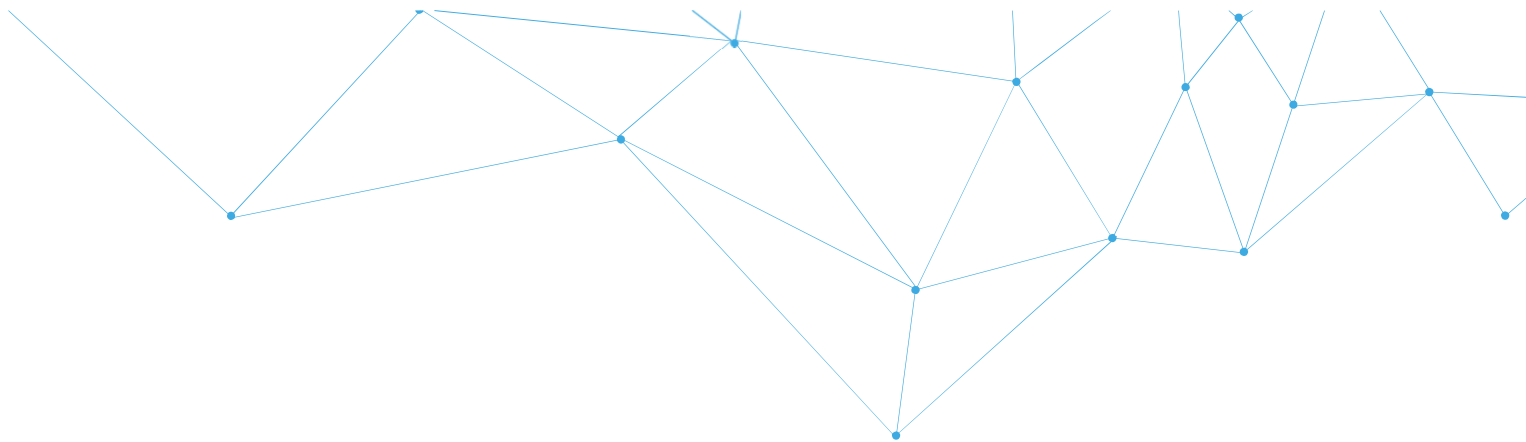
SOCIAL

- Collaborating with ORG
- Direct assistance for those in social risk situation
- Collaborating with citizens on projects for citizens
- Cooperation with local institutional activities
- Promoting healthy habits and prevention activities
- Volunteering
- Promoting activities for integration in society



ESONOMIC

- Guarantee economic efficiency and sustainability
- Viability Plan
- Savings Plan



CST: CONSORCI SANITARI DE TERRASSA

Ctra. Torrebónica, s/n
08227 Terrassa

t 93 731 00 07
www.cst.cat

El Consorci Sanitari de Terrassa és una entitat pública de la Generalitat de Catalunya, l'Ajuntament de Terrassa i la Fundació Sant Llützer

